



CE LSGD <celsgd@gmail.com>

Fwd: HEAVY RAINFALL WARNING

1 message

SEOC | DMD | Kerala <seoc.gok@gmail.com>
To: CE LSGD <celsgd@gmail.com>, lsgdddepartment@gmail.com

Wed, Oct 3, 2018 at 2:33 PM

----- Forwarded message -----

From: **SEOC | DMD | Kerala** <seoc.gok@gmail.com>
Date: Wed, Oct 3, 2018 at 1:36 PM
Subject: Fwd: HEAVY RAINFALL WARNING
To: <info@keralatourism.org>, <deptour@keralatourism.org>

Heavy rainfall (7-11 cm in 24 hours) to very heavy rainfall (12 - 20 cm in 24 hours) is most likely to occur at one or two places in Kerala on 3rd, 4th, 5th & 6th October 2018 and heavy rainfall with extremely heavy rainfall (20 cm and above in 24 hrs) is most likely to occur at one or two places in Kerala on 7th October 2018.

Heavy rain rainfall is most likely to occur at one or two places in Lakshadweep on 5th, 6th & 7th October 2018.

--

For
DIRECTOR
METEOROLOGICAL CENTRE,
THIRUVANANTHAPURAM-695 033
Ph: 0471-2330025 / 2322330 / 2322894
Fax: 0471-2322894
Alternate E-Mail: mc.trv@imd.gov.in
WEBSITE : <http://www.imdtvm.gov.in/>

--

കേരള സംസ്ഥാന അടിയന്തിരഘട്ട കാര്യനിർവ്വഹണ കേന്ദ്രം (കെ.എസ്.സി.ഓ.സി) | Kerala State Emergency Operations Centre (KSEOC)
കേരള സംസ്ഥാന ദുരന്ത നിവാരണ അതോറിറ്റി (കെ.എസ്.ഡി.എം.എ) | Kerala State Disaster Management Authority (KSDMA)
ഒബ്സർവേറ്ററി കുന്ന്, വികാസ് ഭവൻ തപാൽ ഓഫീസ് | Observatory Hills, Vikas Bhavan P.O
തിരുവനന്തപുരം, കേരളം - 695033 | Thiruvananthapuram, Kerala - 695033
പകൽ സമയ ടെലിഫോൺ | Day time phone - 0471 2331345, 0471-2331645, Toll Free 1079
രാത്രി സമയ ടെലിഫോൺ | Night time phone - 0471 2364424
ഫാക്സ് | Fax - 0471 2364424
www.sdma.kerala.gov.in

--

കേരള സംസ്ഥാന അടിയന്തിരഘട്ട കാര്യനിർവ്വഹണ കേന്ദ്രം (കെ.എസ്.സി.ഓ.സി) | Kerala State Emergency Operations Centre (KSEOC)
കേരള സംസ്ഥാന ദുരന്ത നിവാരണ അതോറിറ്റി (കെ.എസ്.ഡി.എം.എ) | Kerala State Disaster Management Authority (KSDMA)
ഒബ്സർവേറ്ററി കുന്ന്, വികാസ് ഭവൻ തപാൽ ഓഫീസ് | Observatory Hills, Vikas Bhavan P.O
തിരുവനന്തപുരം, കേരളം - 695033 | Thiruvananthapuram, Kerala - 695033
പകൽ സമയ ടെലിഫോൺ | Day time phone - 0471 2331345, 0471-2331645, Toll Free 1079
രാത്രി സമയ ടെലിഫോൺ | Night time phone - 0471 2364424
ഫാക്സ് | Fax - 0471 2364424

www.sdma.kerala.gov.in

--

കേരള സംസ്ഥാന അടിയന്തിരഘട്ട കാര്യനിർവ്വഹണ കേന്ദ്രം (കെ.എസ്.സി.ഓ.സി) | Kerala State Emergency Operations Centre (KSEOC)

കേരള സംസ്ഥാന ദുരന്ത നിവാരണ അതോറിറ്റി (കെ.എസ്.ഡി.എം.എ) | Kerala State Disaster Management Authority (KSDMA)

ഒബ്സർവേറ്ററി കൂന്ന്, വികാസ് ഭവൻ തപാൽ ഓഫീസ് | Observatory Hills, Vikas Bhavan P.O

തിരുവനന്തപുരം, കേരളം - 695033 | Thiruvananthapuram, Kerala - 695033

പകൽ സമയ ടെലിഫോൺ | Day time phone - 0471 2331345, 0471-2331645, Toll Free 1079

രാത്രി സമയ ടെലിഫോൺ | Night time phone - 0471 2364424

ഫാക്സ് | Fax - 0471 2364424

www.sdma.kerala.gov.in

--

കേരള സംസ്ഥാന അടിയന്തിരഘട്ട കാര്യനിർവ്വഹണ കേന്ദ്രം (കെ.എസ്.സി.ഓ.സി) | Kerala State Emergency Operations Centre (KSEOC)

കേരള സംസ്ഥാന ദുരന്ത നിവാരണ അതോറിറ്റി (കെ.എസ്.ഡി.എം.എ) | Kerala State Disaster Management Authority (KSDMA)

ഒബ്സർവേറ്ററി കൂന്ന്, വികാസ് ഭവൻ തപാൽ ഓഫീസ് | Observatory Hills, Vikas Bhavan P.O

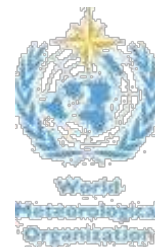
തിരുവനന്തപുരം, കേരളം - 695033 | Thiruvananthapuram, Kerala - 695033

പകൽ സമയ ടെലിഫോൺ | Day time phone - 0471 2331345, 0471-2331645, Toll Free 1079

രാത്രി സമയ ടെലിഫോൺ | Night time phone - 0471 2364424

ഫാക്സ് | Fax - 0471 2364424

www.sdma.kerala.gov.in



**REGIONAL SPECIALISED METEOROLOGICAL CENTRE-TROPICAL CYCLONES, NEW
DELHI TROPICAL WEATHER OUTLOOK**

DEMS-RSMC TROPICAL CYCLONES NEW DELHI DATED 03.10.2018

TROPICAL WEATHER OUTLOOK FOR NORTH INDIAN OCEAN (THE BAY OF BENGAL AND ARABIAN SEA) VALID FOR NEXT 120 HOURS ISSUED AT 0600 UTC OF 03.10.2018 BASED ON 0300 UTC OF 03.10.2018.

BAY OF BENGAL:

A LOW PRESSURE AREA IS LIKELY TO DEVELOP OVER SOUTHWEST BAY OF BENGAL AROUND 8TH OCTOBER 2018.

SCATTERED LOW AND MEDIUM CLOUDS WITH EMBEDDED MODERATE TO INTENSE CONVECTION LAY OVER SOUTH BAY OF BENGAL.

PROBABILITY OF CYCLOGENESIS DURING NEXT 120 HRS:

24 HOURS	24-48 HOURS	48-72 HOURS	72-96 HOURS	96-120 HOURS
NIL	NIL	NIL	NIL	NIL

ARABIAN SEA:

A LOW PRESSURE AREA (LPA) IS LIKELY TO DEVELOP OVER SOUTHEAST ARABIAN SEA ON 5TH OCTOBER 2018. IT IS VERY LIKELY TO CONCENTRATE INTO A DEPRESSION AND MOVE NORTHWESTWARDS DURING SUBSEQUENT 48 HOURS. IT IS ALSO VERY LIKELY TO INTENSIFY INTO CYCLONIC STORM SUBSEQUENTLY WHILE MOVING NORTHWESTWARDS.

SCATTERED LOW AND MEDIUM CLOUDS WITH EMBEDDED INTENSE TO VERY INTENSE CONVECTION LAY OVER SOUTH ARABIAN SEA, COMORIN & GULF OF MANNAR.

PROBABILITY OF CYCLOGENESIS DURING NEXT 120 HRS:

24 HOURS	24-48 HOURS	48-72 HOURS	72-96 HOURS	96-120 HOURS
NIL	NIL	LOW	MODERATE	HIGH

REMARKS:

THE MADDEN JULIAN OSCILLATION (MJO) INDEX IS CURRENTLY IN PHASE 1 WITH AMPLITUDE MORE THAN 1. IT WILL CONTINUE IN SAME PHASE WITH AMPLITUDE GREATER THAN 1 AND WILL MOVE TO PHASE 2 FROM 11 OCTOBER ONWARDS. HENCE, MJO PHASE WILL BE FAVOURABLE FOR ENHANCEMENT OF CONVECTION & CYCLOGENESIS OVER SOUTH & ADJOINING CENTRAL ARABIAN SEA DURING 6-12TH OCTOBER. MAJORITY OF NUMERICAL MODELS INCLUDING ECMWF, NCMRWF UNIFIED MODELS (NCUM), NCUM ENSEMBLE PREDICTION SYSTEM (NEPS), IMD GFS SUGGEST FORMATION OF LPA OVER SOUTHEAST ARABIAN SEA ON 5TH OCTOBER. THESE MODELS ALSO SUGGEST GRADUAL INTENSIFICATION INTO CYCLONIC STORM & NORTHWESTWARD MOVEMENT INITIALLY DURING SUBSEQUENT FIVE DAYS. GENESIS POTENTIAL PARAMETER INDEX DEVELOPED BY IMD INDICATES POTENTIAL ZONE FOR CYCLOGENESIS OVER SOUTHEAST & EASTCENTRAL ARABIAN SEA DURING 6-8TH OCTOBER.

MOST OF THE MODELS ARE ALSO SUGGESTING FORMATION OF ANOTHER LPA OVER SOUTHWEST BAY OF BENGAL AND NEIGHBOURHOOD AROUND 8TH OCTOBER.

PROBABILITY OF CYCLOGENESIS (FORMATION OF DEPRESSION)

NIL: 0%, LOW: 1-25%, FAIR: 26-50%, MODERATE: 51-75% AND HIGH: 76-100%

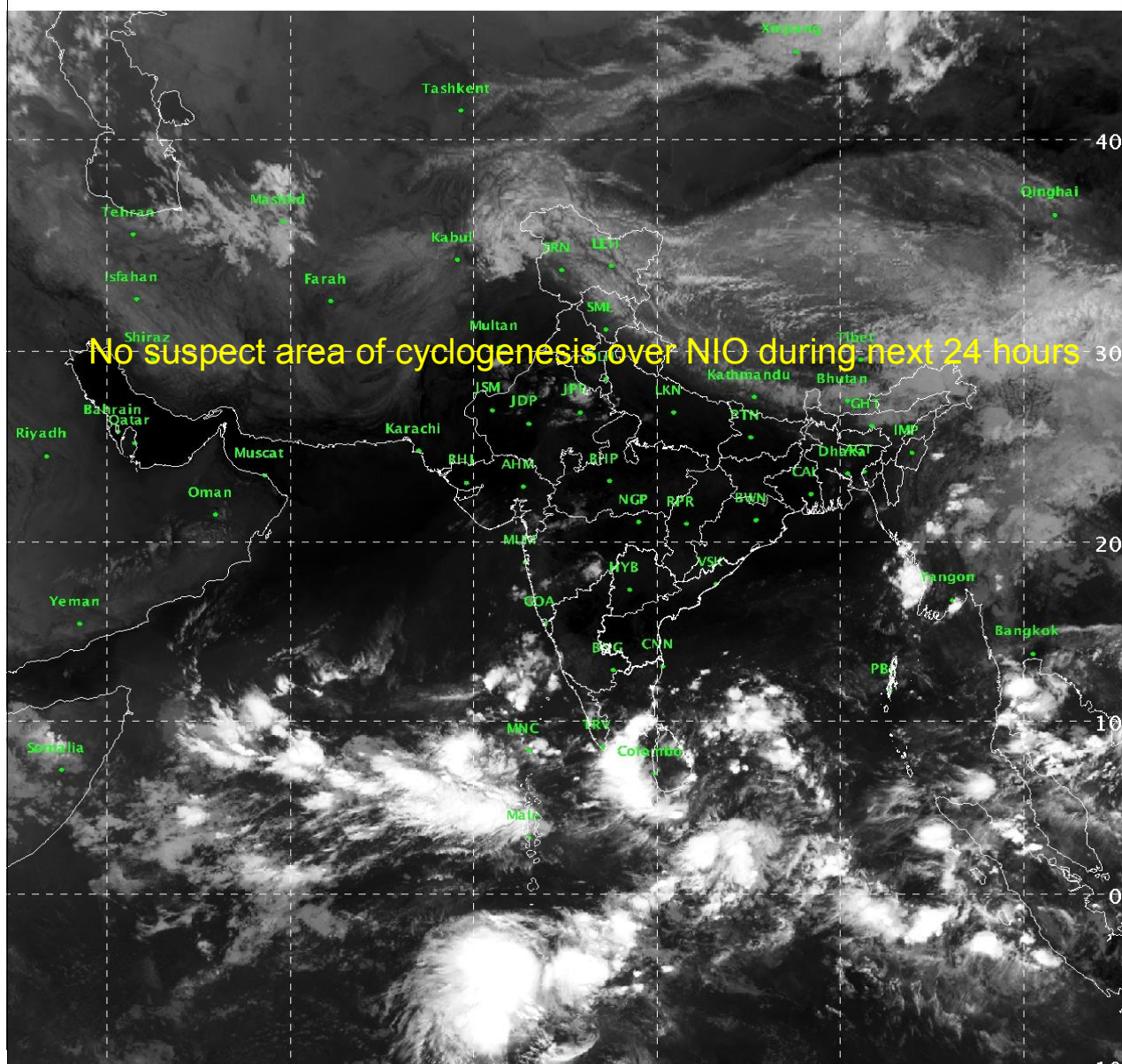
SAT :INSAT-3D IMG

IMG_TIR1 10.8 um

L1C Mercator (LINEAR STRETCH: 1.0%)

03-10-2018/03:00 GMT

03-10-2018/08:30 IST



508

894

IMD/Delhi

PROBABILITY OF CYCLOGENESIS (FORMATION OF DEPRESSION)

NIL: 0%, LOW: 1-25%, FAIR: 26-50%, MODERATE: 51-75% AND HIGH: 76-100%



District Rainfall Forecast For Kerala and Lakshadweep

03 October 2018

Issue Time:1400 hours IST

District		03-Oct Today	04-Oct Thu	05-Oct Fri	06-Oct Sat	07-Oct Sun
Thiruvananthapuram	Spatial Distribution:	Most Places	Most Places	Most Places	Most Places	Most Places
	Intensity:	Heavy rainfall at isolated places	Heavy rainfall at isolated places	Heavy to very heavy rainfall at isolated places	Heavy to very heavy rainfall at isolated places	Heavy rainfall at isolated places
	Probability:	Most Likely	Most Likely	Most Likely	Most Likely	Most Likely
Kollam	Spatial Distribution:			Most Places	Most Places	Most Places
	Intensity:	Light to moderate rainfall	Light to moderate rainfall	Heavy rainfall at isolated places	Heavy to very heavy rainfall at isolated places	Heavy rainfall at isolated places
	Probability:	Most Likely	Most Likely	Most Likely	Most Likely	Most Likely
Pathanamthitta	Spatial Distribution:	Most Places		Most Places	Most Places	Most Places
	Intensity:	Heavy rainfall at isolated places	Light to moderate rainfall	Heavy to very heavy rainfall at isolated places	Heavy to very heavy rainfall at isolated places	Heavy to very heavy rainfall at isolated places
	Probability:	Most Likely	Most Likely	Most Likely	Most Likely	Most Likely
Alappuzha	Spatial Distribution:				Most Places	Most Places
	Intensity:	Light to moderate rainfall	Light to moderate rainfall	Light to moderate rainfall	Heavy to very heavy rainfall at isolated places	Heavy rainfall at isolated places
	Probability:	Most Likely	Most Likely	Most Likely	Most Likely	Most Likely

Distribution of Rainfall		Intensity of Rainfall		Probability of Occurrence (%)		Warning Colour Codes
Category	% of stations	Type	Amount (mm)	Unlikely	< 25	Warning (Take Action)
Most Places	76 - 100%	Very Light	0.1 to 2.4	Likely	25 - 50	Alert (Be Prepared)
Many Places	51-75%	Light	2.5 - 15.5	Very Likely	50 - 75	Watch (Be Updated)
A Few Places	26-50%	Moderate	15.6 - 64.4	Most Likely	> 75	No Warning (No Action)
Isolated places	1-25%	Heavy	64.5 - 115.5			
Dry	0	Very Heavy	115.6 - 204.4			
		Extremely Heavy	≥ 204.5			



District Rainfall Forecast For Kerala and Lakshadweep

03 October 2018

Issue Time:1400 hours IST

District		03-Oct Today	04-Oct Thu	05-Oct Fri	06-Oct Sat	07-Oct Sun
Kottayam	Spatial Distribution:			Most Places		Most Places
	Intensity:	Light to moderate rainfall	Light to moderate rainfall	Heavy rainfall at isolated places	Light to moderate rainfall	Heavy rainfall at isolated places
	Probability:	Most Likely	Most Likely	Most Likely	Most Likely	Most Likely
Ernakulam	Spatial Distribution:			Most Places		Most Places
	Intensity:	Light to moderate rainfall	Light to moderate rainfall	Heavy rainfall at isolated places	Light to moderate rainfall	Heavy rainfall at isolated places
	Probability:	Most Likely	Most Likely	Most Likely	Most Likely	Most Likely
Idukki	Spatial Distribution:	Most Places	Most Places	Most Places	Most Places	Most Places
	Intensity:	Heavy rainfall at isolated places	Heavy to very heavy rainfall at isolated places	Heavy to very heavy rainfall at isolated places	Heavy' to very heavy rainfall at isolated places	Extremely heavy rainfall
	Probability:	Most Likely	Most Likely	Most Likely	Most Likely	Most Likely
Thrissur	Spatial Distribution:			Most Places	Many Places	Most Places
	Intensity:	Light to moderate rainfall	Light to moderate rainfall	Heavy rainfall at isolated places	Heavy' to very heavy rainfall at isolated places	Extremely heavy rainfall
	Probability:	Most Likely	Most Likely	Most Likely	Most Likely	Most Likely

Distribution of Rainfall		Intensity of Rainfall		Probability of Occurrence (%)		Warning Colour Codes
Category	% of stations	Type	Amount (mm)	Unlikely	< 25	Warning (Take Action)
Most Places	76 - 100%	Very Light	0.1 to 2.4	Likely	25 - 50	Alert (Be Prepared)
Many Places	51-75%	Light	2.5 - 15.5	Very Likely	50 - 75	Watch (Be Updated)
A Few Places	26-50%	Moderate	15.6 - 64.4	Most Likely	> 75	No Warning (No Action)
Isolated places	1-25%	Heavy	64.5 - 115.5			
Dry	0	Very Heavy	115.6 - 204.4			
		Extremely Heavy	≥ 204.5			



District Rainfall Forecast For Kerala and Lakshadweep

03 October 2018

Issue Time:1400 hours IST

District		03-Oct Today	04-Oct Thu	05-Oct Fri	06-Oct Sat	07-Oct Sun
Palakkad	<i>Spatial Distribution:</i>			Most Places	Most Places	Most Places
	<i>Intensity:</i>	Light to moderate rainfall	Light to moderate rainfall	Heavy rainfall at isolated places	Heavy to very heavy rainfall at isolated places	Extremely heavy rainfall
	<i>Probability:</i>	Most Likely	Most Likely	Most Likely	Most Likely	Most Likely
Malappuram	<i>Spatial Distribution:</i>					Many Places
	<i>Intensity:</i>	Light to moderate rainfall	Light to moderate rainfall	Light to moderate rainfall	Light to moderate rainfall	Heavy rainfall at isolated places
	<i>Probability:</i>	Most Likely	Most Likely	Most Likely	Most Likely	Most Likely
Kozhikode	<i>Spatial Distribution:</i>	Most Places	Most Places	Most Places	Most Places	Many Places
	<i>Intensity:</i>	Heavy rainfall at isolated places	Heavy rainfall at isolated places	Heavy rainfall at isolated places	Heavy rainfall at isolated places	Heavy to very heavy rainfall at isolated places
	<i>Probability:</i>	Most Likely	Most Likely	Most Likely	Most Likely	Most Likely
Wayanad	<i>Spatial Distribution:</i>	Most Places	Most Places	Most Places	Most Places	Many Places
	<i>Intensity:</i>	Heavy rainfall at isolated places	Heavy rainfall at isolated places	Heavy rainfall at isolated places	Heavy rainfall at isolated places	Heavy rainfall at isolated places
	<i>Probability:</i>	Most Likely	Most Likely	Most Likely	Most Likely	Most Likely

Distribution of Rainfall		Intensity of Rainfall		Probability of Occurrence (%)		Warning Colour Codes
Category	% of stations	Type	Amount (mm)			
Most Places	76 - 100%	Very Light	0.1 to 2.4	Unlikely	< 25	Warning (Take Action)
Many Places	51-75%	Light	2.5 - 15.5	Likely	25 - 50	Alert (Be Prepared)
A Few Places	26-50%	Moderate	15.6 - 64.4	Very Likely	50 - 75	Watch (Be Updated)
Isolated places	1-25%	Heavy	64.5 - 115.5	Most Likely	> 75	No Warning (No Action)
Dry	0	Very Heavy	115.6 - 204.4			
		Extremely Heavy	≥ 204.5			



District Rainfall Forecast For Kerala and Lakshadweep

03 October 2018

Issue Time:1400 hours IST

District		03-Oct Today	04-Oct Thu	05-Oct Fri	06-Oct Sat	07-Oct Sun
Kannur	Spatial Distribution:					Many Places
	Intensity:	Light to moderate rainfall	Light to moderate rainfall	Light to moderate rainfall	Light to moderate rainfall	Heavy to very heavy rainfall at isolated places
	Probability:	Most Likely	Most Likely	Most Likely	Most Likely	Most Likely
Kasaragode	Spatial Distribution:					Most Places
	Intensity:	Light to moderate rainfall	Light to moderate rainfall	Light to moderate rainfall	Light to moderate rainfall	Heavy to very heavy rainfall at isolated places
	Probability:	Most Likely	Most Likely	Most Likely	Most Likely	Most Likely
Lakshadweep	Spatial Distribution:			Most Places	Most Places	Most Places
	Intensity:	Light to moderate rainfall	Light to moderate rainfall	Heavy rainfall at isolated places	Heavy rainfall at isolated places	Heavy rainfall at isolated places
	Probability:	Most Likely	Most Likely	Most Likely	Most Likely	Most Likely

Distribution of Rainfall		Intensity of Rainfall		Probability of Occurrence (%)		Warning Colour Codes
Category	% of stations	Type	Amount (mm)			
Most Places	76 - 100%	Very Light	0.1 to 2.4	Unlikely	< 25	Warning (Take Action)
Many Places	51-75%	Light	2.5 - 15.5	Likely	25 - 50	Alert (Be Prepared)
A Few Places	26-50%	Moderate	15.6 - 64.4	Very Likely	50 - 75	Watch (Be Updated)
Isolated places	1-25%	Heavy	64.5 - 115.5	Most Likely	> 75	No Warning (No Action)
Dry	0	Very Heavy	115.6 - 204.4			
		Extremely Heavy	≥ 204.5			